

---

P R O - S E R I E S

## *The Trevino*

At **AMEN CORNER** you will find  
an exclusive lifestyle inspired by the beautiful view  
of Deacons Walk Golf Course.

These incredible single family golf villas  
capture the essence of luxury.

The soaring ceilings along with the wall to wall glass  
bring together breathtaking views.

At Paulson Construction dreams are fulfilled  
with our focus on craftsmanship and  
excellence in design.



*Single Family*

*Golf Villas*

*in a*

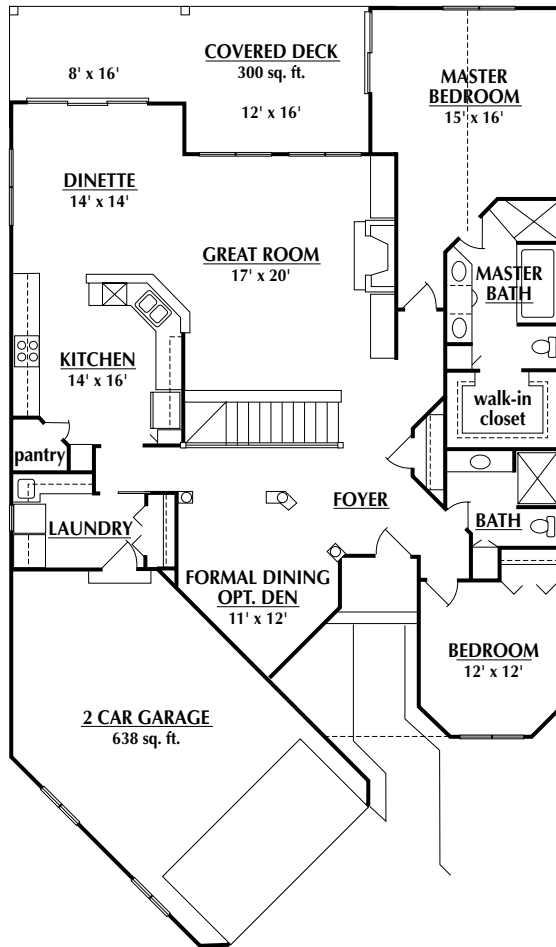
*Planned*

*Association*

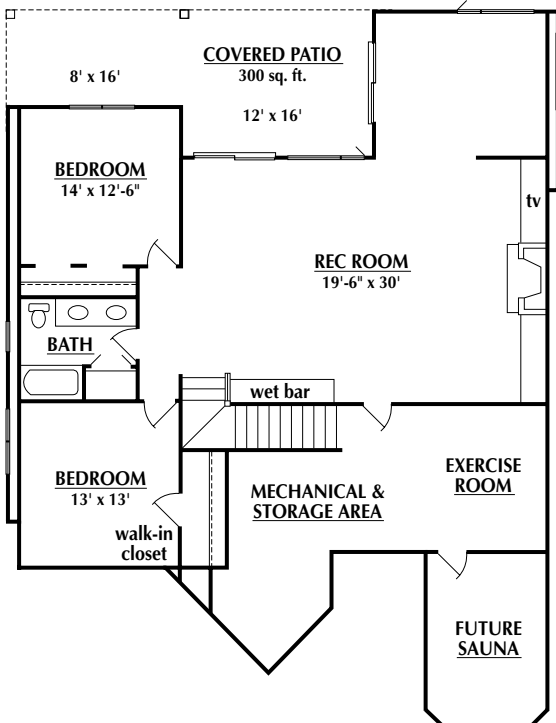
PC  
P A U L S O N  
CONSTRUCTION

P.O. Box 247  
ANOKA, MN 55303  
LICENSE 6329  
612-889-7378

MAIN LEVEL



LOWER LEVEL



*The Trevino Highlights*

- Golf Privileges to Deacons Walk Golf Course
- Interior Design by Doug Paulson
- Honeywell "Perfect Climate Home"
- Towering 12' Ceiling in Main Level
- 2 Car Garage
- Total Kohler Home
- Generous 9' Ceiling in Lower Level
- Innovative Design in Cabinetry & Lighting
- Advanced Telecommunications
- Main Level—2040 sq. ft.
- Lower Level—1380 sq. ft.